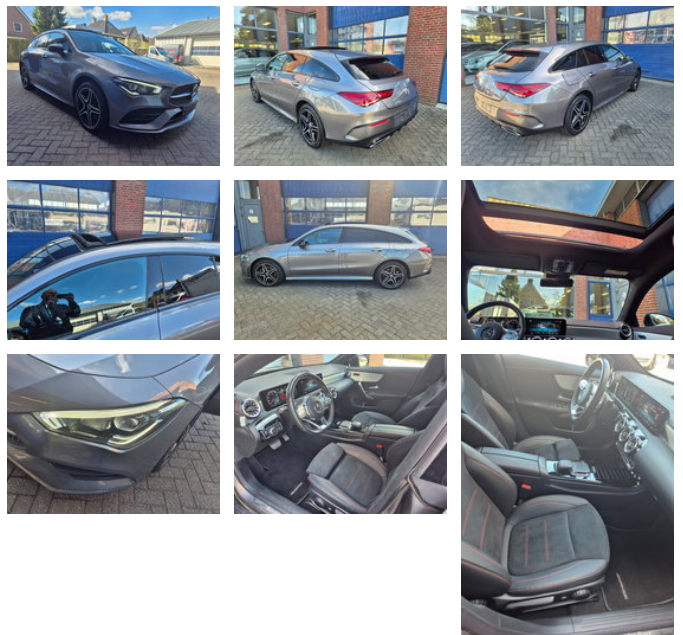


Mercedes-Benz CLA 250 E hybrid AMG

General features

Brand	Mercedes-Benz
Subcategory	Coupé
Licence plate	kfg-82-v
Odometer reading	53.121km
Construction year	2023
Date of first registration	22-05-2023
Color	Gray
Condition	Used
Fuel	energyType.hybrid



Characteristics

Empty weight	1.660kg
Door count	5

Mercedes-Benz CLA 250 E hybrid AMG

Technical specifications

Engine output

160hp

Accessories

- Adaptive Cruise Control
- Airbags
- ASR (Anti-Slip Regulation/Traction Control)
- Automatic
- Bluetooth
- DAB Radio
- Electric windows
- ESP
- Hill Assist
- Keyless Go
- Leather interior
- Metallic paint
- Heated Mirrors
- Anti-lock braking system
- Reversing camera
- Air conditioning
- Alloy wheels
- Navigation system
- Tinted glass
- Power steering
- Driver's airbag
- Passenger airbag
- Anti-lock braking system
- Anti-skid system
- Audio operation on steering wheel
- Automatically dimming rear mirror
- Onboard computer
- Bumpers in colour of body
- Remote central locking
- Climate control
- Third brake light
- Electrically operated rear windows
- Electrically operated front windows
- Electrically adjustable door mirrors
- Rear head rests
- Front central armrest
- Panorama roof
- Rear parking sensor
- Stability control
- Heated seat
- Height adjustable steering wheel

- Heated door mirrors
- Front side airbags
- Folding rear seats (unequal parts)
- Rear wiper
- Immobiliser
- Rear spoiler